



# LINGJACK

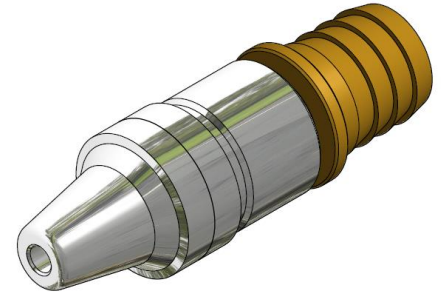
## 林傑

### JET NOZZLE

**MODEL : CJ-25**

#### Specification :

- Connection : 1" Serrated Tail
- Design Pressure : 12 bar
- Test Pressure : 18 bar
- Body Material : Brass
- Gross Weight : Approximate 0.5 kg
- Orifice Diameter : 6 mm
- Flow Rate : Tested with 1" x 30m Hose-reel
  - (Jet) : 46 lpm @ 6 bar



#### Features :

- 2 Way Control - Jet/Off
- Good Quality
- No Maintenance

**Standards :** Compliance with EN671 Hosereel

**Tested To:** LPCB (UK), SETSCO

**Origin :** Made in Singapore

Ordering Matrix :

Com No.	Connection	Tested By
03008400	1" Serrated Tail	LPCB, SETSCO



**GOOD QUALITY GREAT SERVICES**

[www.lingjack.com](http://www.lingjack.com)

LEW-MDS-CJ25 Rev00 (May24)

Specification subjects to change without prior notice