



# LINGJACK

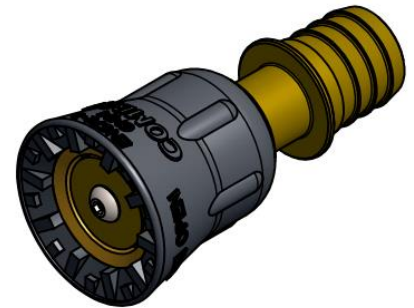
## 林傑

### JET/SPRAY NOZZLE

**MODEL : CJS-25**

#### Specification :

- Connection : 1" Serrated Tail
- Design Pressure : 12 bar
- Test Pressure : 18 bar
- Body Material : Brass
- Gross Weight : 0.285kg
- Orifice Diameter : 6 mm
- Flow Rate : Tested with 1" x 30m Hose-reel
  - (Jet) : 69 lpm @ 6 bar
  - (Spray) : 87 lpm @ 6 bar



#### Features :

- 3 Way Control - Jet/Spray/Off
- Good Quality
- Easy to operate
- No Maintenance

**Standards** : Compliance with EN671 Hosereel

**Tested By** : LPCB (UK), SETSCO

**Origin** : Made in Singapore

Ordering Matrix :

Com No.	Connection	Tested By
03172600	1" Serrated Tail	LPCB, SETSCO



**GOOD QUALITY GREAT SERVICES**

[www.lingjack.com](http://www.lingjack.com)

LEW-MDS-CJS25 Rev00 (May24)

Specification subjects to change without prior notice